

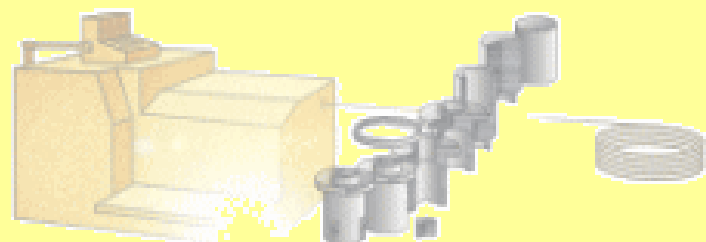


Bringing Your Vision to Life Adachi Co., Ltd.



Imagine.
Dare.
Reflect.
Grow.
Create.

「 **Bringing** Your **Vision** to Life 」



【Company Profile】

【Message from the President】

Since our establishment, we have operated primarily in cutting and machining. 30 years ago, we introduced cold heading technology (cold forging) and, through much trial and error, have made steady advancements in our technical capabilities. Cold heading, however, is a profoundly intricate field. We recognize that we are still on the path to mastery and continue to make daily efforts to enhance our expertise. In an era of rapid change and global competition, we remain committed to creating high-quality, reliable products at low cost, driven by a bold spirit of innovation. In an era of rapid change and global competition, we remain committed to creating high-quality, reliable products at low cost, driven by a bold spirit of innovation. We will continue to meet customer needs with dedication, and we sincerely ask for your ongoing support.

Yuzo Tanaka, President and Director

【Company Overview】

Company Name	Adachi Co., Ltd.
President and Representative Director	Noriyoshi Hasegawa
Address	579 Inuma, Hasuda City, Saitama Prefecture, 349-0135, Japan
TEL	+81-48-766-2338
FAX	+81-48-766-2340
Website	http://www.adachi-ss.jp/
E-MAIL	info@adachi-ss.jp
Business Overview	<ul style="list-style-type: none">• Manufacturing of automotive parts (Cold heading, cutting, outer diameter grinding, rolling, tapping)• Manufacturing of Special Parts
Established	December 1977
Capital	10 million yen
Annual Sales	480 million yen
Number of Employees	21
Main Banks	Saitama Resona Bank / The Shoko Chukin Bank
Access	By Train: Approx. 15 minutes by taxi from Shiraoka Station or Shin-Shiraoka (JR Utsunomiya Line) By Car: Approx. 5 minutes from the Shiraoka-Shobu Interchange on the Ken-Ō Expressway



Manufacturing of Automotive Through-Hole Components and Specialized Parts / ISO

Approximately 70% of our manufactured products are through-hole components for the automotive industry, while the remaining 30% consists of various specialized parts. We are equipped with secondary processing machines, cutting machines, outer diameter grinders, thread rolling machines, and tapping machines. By performing in-house secondary processing on cold-headed parts produced with part formers, outer diameter grinders, thread rolling machines, we have built a system that enables us to meet customer requirements in both quality and cost-efficiency.



※ To ensure quality control, improve productivity, and promote environmental sustainability, our factory is certified under ISO 9001 and ISO 14001 standards.

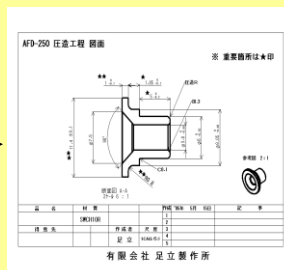


Comprehensive support from product drawings to mold design using 3D CAD

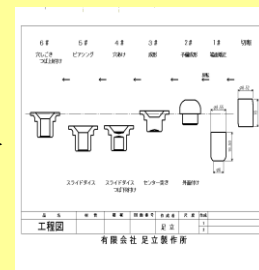
We carry out the entire process in-house, from 3D CAD product drawings to process flow diagrams, assembly drawings with mold assemblies, and mold design. This integrated approach contributes to the production of high-precision components. With a constant spirit of inquiry, we are continuously engaged in research and development.



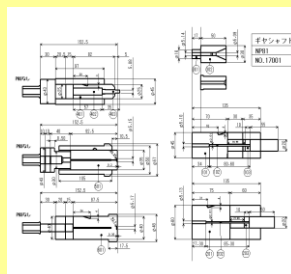
3D CAD Modeling



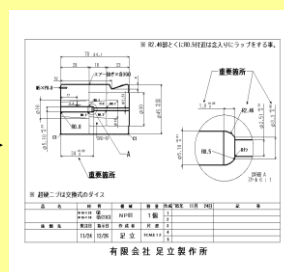
Product Design Drawing



Manufacturing Process Diagrams



Mold Assembly Schematic



Mold Design Drawings



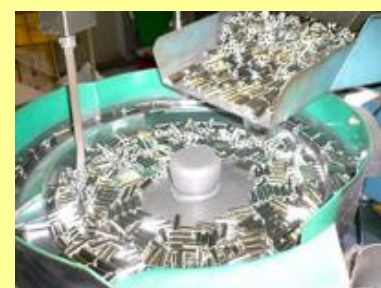
Final Product Manufacturing



24-hour operation capable of handling small-lot production

High quality and low cost for small-lot, multi-product manufacturing. We have a monthly production capacity of approximately 5 million units, and our cold heading machines (equipped with YARISTE case setters) are capable of operating 24 hours a day.

We are committed to continuously responding to our customers' needs.





Manufacturing Process: Cost-Efficient, High-Quality Production through In-House Secondary

2D3B Cold Header



Yariste Case Stocker with Washing Function
(Capable of 24-Hour Operation)

4D4B / 6D6B Parts Former



Capable of producing complex and high-precision components. Equipped with a case stocker and supports rear-side machining. (Capable of 24-Hour Operation)

NC Lathe (Citizen A20)



Machining complex components up to $\phi 20$ from bar material. Supports double-sided machining.



Lot Traceability Check Sheet



Secondary Processing



Grinding Process



Outer Diameter Grinding
(Tolerance ± 0.01 mm)



① Thread Rolling Machine
② Tapping Machine



Internal Tapping /
External Diamond Knurling



NC Dual-Spindle Machining Center
Capable of Back-Side Machining



Versatile Secondary Processing
After Cold Heading



Heat Treatment & Plating



Completion

Inspection Process



Automated Optical Sorting Machine



Contour Measurement System



Roundness Measuring System

We use an image-based sorting machine to inspect 100% of all products, ensuring that no defective items are shipped out. Both our digital microscope and profile projector are equipped with 2D data processing system (for pitch, roundness, angle, and more). Printing of measurement data is also available.



Packaging (Counting & Bagging)



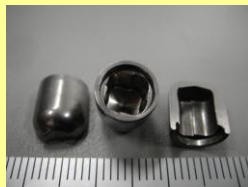
Each item is counted precisely using a photoelectric sensor, ensuring accurate. Each bag is then labeled with the part number, quantity, date, and lot number.



Product Samples (Examples)



Collar (Serrated), from Iron to Stainless Steel (SUS)



Non-Circular Hole Component



2D3B Formed Product, No Secondary Processing



Hexagonal Outer Diameter / Hexagonal Stepped Hole



Automotive Component (Material: SCR440H)



Center Flange + Square Hole (Material: SCM435)



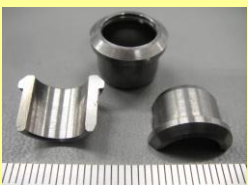
Collar with Outer Diameter Tolerance $\pm 0.01\text{mm}$



Irregularly Shaped Component



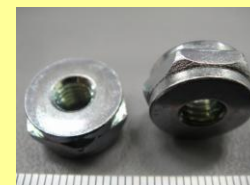
Cold Heading + Rolling + Tapping Combination



Hole Without Step (Material: SUS430)



Stepped Through-Hole (Oxygen-Free Copper)



Center Flange Hex + M6 Thread (2D3B)



Deep Hollow Hole



Connector Terminal



Connector Terminal



Connector Terminal



Equipment

[List of Main Equipment]

Name	Manufacturer	Model	Specifications	Qty
2D3B Cold Header (φ3.5-φ9)	Nakashimada Engineering Works	NP81	Yariste, with washing and case stocker	1
4D4B Cold Header (φ3.5-φ11)	Nakashimada Engineering Works	MST408F	Yariste, with washing and case stocker	1
6D6B Parts Former (φ3.5-φ11)	Nakashimada Engineering Works	MST608F	Yariste, with washing and case stocker	2
6D6B Parts Former (φ3-φ8)	Nakashimada Engineering Works	MST606F	Yariste, with washing and case stocker	1
6D6B Parts Former (φ3.5-φ13)	Nakashimada Engineering Works	BTX610F	Yariste, with washing and case stocker	1
Centerless Grinder	Ohmiya Machinery	Type-20		3
Centerless Grinder	Ohmiya Machinery	Type-18		2
NC Lathe	Citizen Machinery (2012)	A20	With auto bar feeder (automatic supply)	4
NC Secondary Processing Machine (2 Spindles)	Amada (2012)	AA1	Capable of double-sided machining	1
NC Secondary Processing Machine	Eguro (2012)	NUCBOY	Capable of complex machining	1
Secondary Processing Machine	DAIWA	10-type Lathe	Capable of internal/external cutting	8
Secondary Processing Machine	Sanmei Works	M12 Rolling Machine	Threading machine (M8, M12)	2
Secondary Processing Machine	Tokyo Tapping Machine	Super-3NRA M5~10	Tapping processing	1
NC Secondary Processing Machine (with Auto-Loader)	Takisawa (2015)	TCC-1000G	Capable of complex machining, equipped with automatic feeding	1
Secondary Processing Machine (Deburring)	Toho Kogyo	NP-57	Both side chamfering machine	2
Hardness Tester (Micro-Vickers, Rockwell)	Mitutoyo	HM-102, HR-400	Length and diameter inspection	2
Automatic Packaging Machine	Shinnihon Auto Pack			2
Image Sorting Machine	Tokyo Giken	V-Checker		2
Contour Shape Measuring Instrument	Tokyo Seimitsu	Contour Record 1700DX		1
Roudness Measuring Instrument	Tokyo Seimitsu	Rondcom		1
Profile Projector (with 2D Data Processing)	Mitutoyo	PJ-H3000		1
Digital Microscope (with 2D Data Processing)	Mitutoyo	TM		1
Digital Microscope	Keyence	VHX-2000		1
Image Dimension Measurement System	Keyence	IM-6000		1
Eccentricity Measuring Instrument	Universal Punch	KK		1
Surftest Surface Roughness Tester	Tokyo Seimitsu			1
Tool Grinder	Tosei Shoji			2
Milling Machine	Makino			1
General-Purpose Lathe				1
Surface Grinder	Kuroda Precision Industries			1
Mini Cylindrical Grinder	Maruei Machine Works			1
2-Ton Crane				1



Access (Map)

Directions to the Factory

- Exit the Ken-Ō Expressway at the Shiraoka-Shobu Interchange and turn right.
- Proceed about 3 km (to the 4th intersection), then pass the traffic signal (Shimizu Industrial Park Entrance).
- Proceed another 200 meters, then turn right where the median strip ends. (You will see a building with the ADACHI logo on the right-hand side.)

It takes about 5 minutes total from the Shiraoka-Shobu Interchange.

